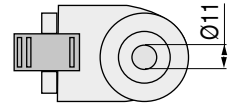
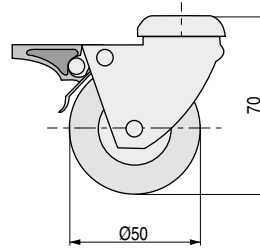
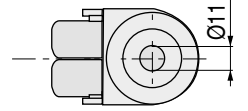
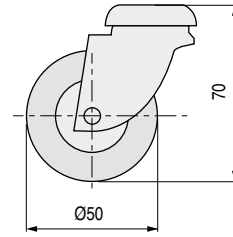

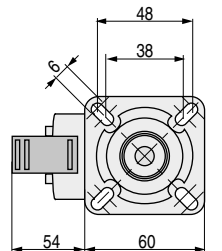
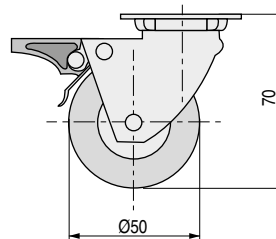
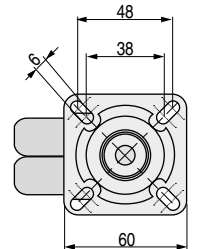
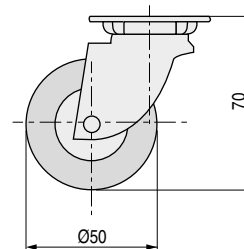



CELIA TP Rueda giratoria doble, con freno o sin freno
Ø50 H70 Taladro pasante



CÓDIGO	Freno	Carga máxima	Material	Acabado	
1340.303	sin freno	60kg.	hierro-goma	zincado-gris	80
1340.304	con freno	60kg.	hierro-goma	zincado-gris	75

CELIA PL Rueda giratoria doble, con freno o sin freno
Ø50 H70 Con placa



CÓDIGO	Freno	Carga máxima	Material	Acabado	
1340.305	sin freno	60kg.	hierro-goma	zincado-gris	80
1340.306	con freno	60kg.	hierro-goma	zincado-gris	75