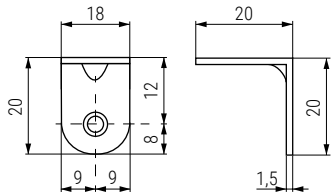
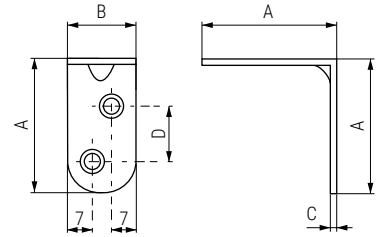


LOTUS 1A Ángulo de refuerzo Corner bracket



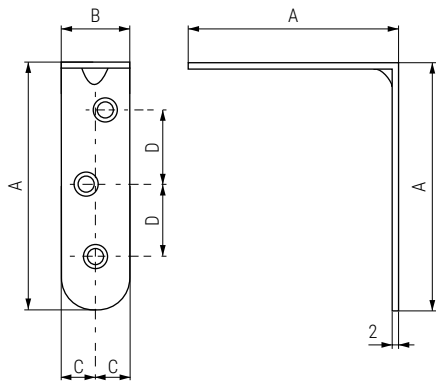
| Código Code | Material Material | Acabado Finish | |
|----------------|----------------------|-------------------|-----|
| 3.310 | steel | zincado/zinc | 100 |

LOTUS 2A Ángulo de refuerzo Corner bracket



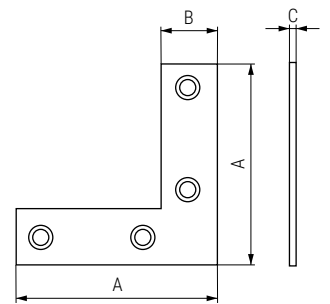
| Código Code | A | B | C | D | Material Material | Acabado Finish | |
|----------------|----|----|-----|----|----------------------|-------------------|-----|
| 3.312 | 30 | 19 | 1,5 | 13 | steel | zincado/zinc | 100 |
| 3.313 | 40 | 19 | 2 | 20 | steel | zincado/zinc | 100 |
| 3.314 | 50 | 19 | 2 | 26 | steel | zincado/zinc | 100 |
| 3.315 | 60 | 19 | 2 | 33 | steel | zincado/zinc | 100 |

LOTUS 3A Ángulo de refuerzo Corner bracket



| Código Code | A | B | C | D | Material Material | Acabado Finish | |
|----------------|-----|----|-----|----|----------------------|-------------------|-----|
| 3.316 | 80 | 20 | 10 | 28 | steel | zincado/zinc | 100 |
| 3.317 | 100 | 19 | 9,5 | 35 | steel | zincado/zinc | 50 |

ESPLA Escuadra plana Flat corner bracket



| Código Code | A | B | C | Material Material | Acabado Finish | |
|----------------|-----|----|-----|----------------------|-------------------|-----|
| 3.22 | 40 | 12 | 1 | steel | zincado/zinc | 100 |
| 3.23 | 50 | 14 | 1 | steel | zincado/zinc | 100 |
| 3.24 | 60 | 17 | 1 | steel | zincado/zinc | 100 |
| 3.25 | 80 | 20 | 1,2 | steel | zincado/zinc | 100 |
| 3.193 | 100 | 20 | 1,2 | steel | zincado/zinc | 50 |