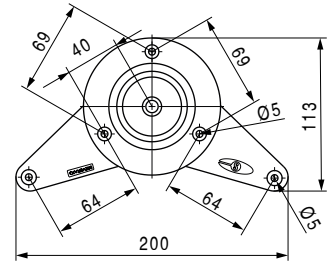


05 Patas y accesorios Legs and accessories

NEIVA Pata de mesa regulable Ø60 y Ø80 Adjustable round table leg Ø60 - Ø80



Regulable
Máx. 22mm.
Adjustment
Max. 22mm.



Soporte en zamak
Zinc alloy support

• Se sirven en embalajes de 1 juego = 4 patas/One set = 4 legs.

| Código Code | Altura Height | Ø | Material Material | Acabado Finish | |
|----------------|------------------|----|----------------------|-------------------|-------|
| 293.31 | 710 | 60 | acero/steel | Cromo/ chrome | 1 set |
| 293.32 | 710 | 60 | acero/steel | blanco/white | 1 set |
| 293.33 | 710 | 60 | acero/steel | negro/black | 1 set |
| 293.34 | 710 | 60 | acero/steel | inox./stainless | 1 set |
| 293.35 | 710 | 60 | acero/steel | gris R9006/grey | 1 set |

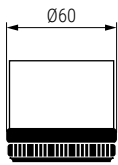
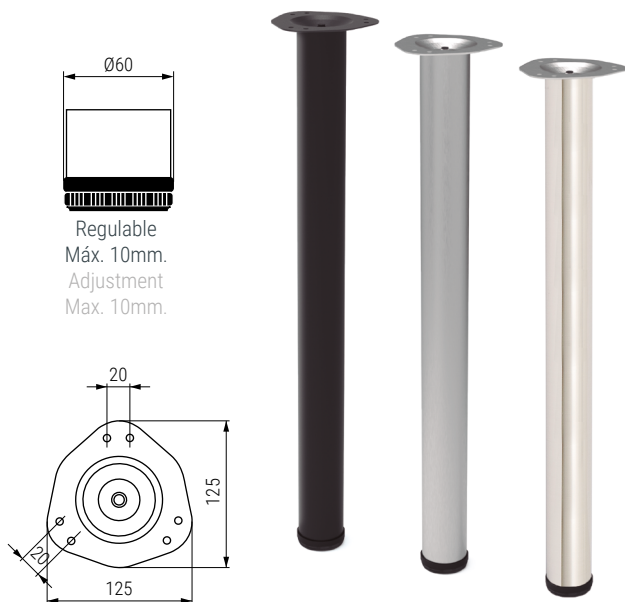
• Se sirven por unidad/One set = 1 leg.

| Código Code | Altura Height | Ø | Material Material | Acabado Finish | |
|----------------|------------------|----|----------------------|-------------------|---|
| 293.41 | 870 | 60 | acero/steel | Cromo/ chrome | 1 |
| 293.44 | 870 | 60 | acero/steel | inox./stainless | 1 |
| 293.45 | 870 | 60 | acero/steel | gris R9006/grey | 1 |

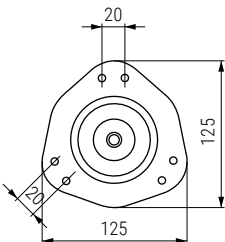
• Se sirven por unidad/One set = 1 leg.

| Código Code | Altura Height | Ø | Material Material | Acabado Finish | |
|----------------|------------------|----|----------------------|-------------------|---|
| 293.51 | 870 | 80 | acero/steel | Cromo/ chrome | 1 |
| 293.54 | 870 | 80 | acero/steel | inox./stainless | 1 |
| 293.55 | 870 | 80 | acero/steel | gris R9006/grey | 1 |

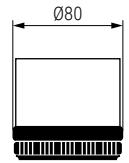
VIGO 60 Pata de mesa regulable Ø60 H710 Adjustable round table leg Ø60 H710



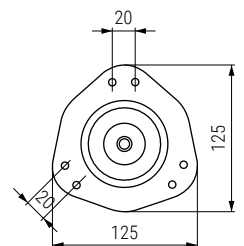
Regulable
Máx. 10mm.
Adjustment
Max. 10mm.



VIGO 80 Pata de mesa regulable Ø80 H810 Adjustable round table leg Ø80 H810



Regulable
Máx. 10mm.
Adjustment
Max. 10mm.



ACTUALIZADO EL DÍA 03/06/2024

•Pata estática (para mesas sin movimiento)/ Static leg (for tables without movement).
•Se sirven en embalajes de 1 juego = 4 patas/One set = 4 legs.

| Código Code | Altura Height | Ø | Material Material | Acabado Finish | |
|----------------|------------------|----|----------------------|---------------------|-------|
| 3535.1 | 710 | 60 | acero/steel | blanco/white | 1 set |
| 3535.2 | 710 | 60 | acero/steel | negro/black | 1 set |
| 3535.3 | 710 | 60 | acero/steel | gris/grey | 1 set |
| 3535.4 | 710 | 60 | acero/steel | Cromo/ chrome | 1 set |
| 3535.6 | 710 | 60 | acero/steel | níquel sat./ nickel | 1 set |

ACTUALIZADO EL DÍA 03/06/2024

•Pata estática (para mesas sin movimiento)/ Static leg (for tables without movement).
• Se sirven en embalajes de 1 juego = 4 patas/One set = 4 legs.

| Código Code | Altura Height | Ø | Material Material | Acabado Finish | |
|----------------|------------------|----|----------------------|---------------------|-------|
| 3535.11 | 810 | 80 | acero/steel | blanco/white | 1 set |
| 3535.14 | 810 | 80 | acero/steel | Cromo/ chrome | 1 set |
| 3535.16 | 810 | 80 | acero/steel | níquel sat./ nickel | 1 set |