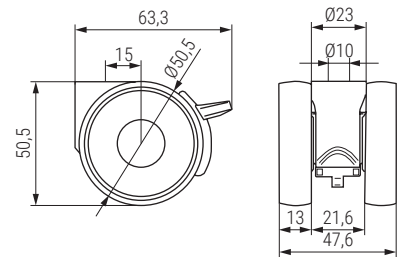


### LINEA LIGHT Rueda giratoria aro doble negro Ø50

Swivel castor



Banda rodadura de poliuretano



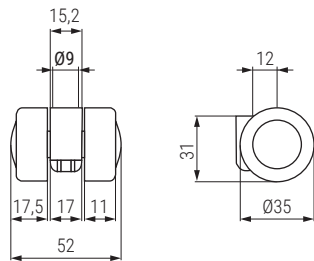
Código Code		Carga máxima Loading capacity	Carga estática Static loading capacity	Material	Acabado Finish	
Sin freno No brake	Con freno With brake					
1360.151	1360.152	50kg.	100kg.	plástico-poliuretano plastic-polyurethane	negro/ black	50

### STYLEA LOW Rueda giratoria doble Ø35

Swivel castor



Hoja técnica  
Data sheet



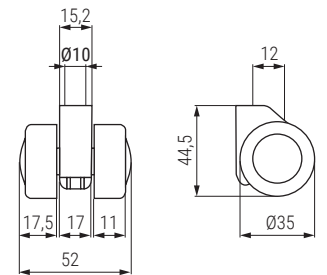
Código Code	Carga máx. Loading capacity	Carga estática Static loading capacity	Material	Acabado Finish	
1360.72	50kg.	100kg.	polyamide	negro/black	150

### STYLEA HIGH Rueda giratoria doble Ø35

Swivel castor



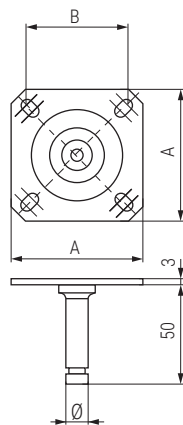
Hoja técnica  
Data sheet



Código Code	Carga máx. Loading capacity	Carga estática Static loading capacity	Material	Acabado Finish	
1360.71	50kg.	100kg.	polyamide	negro/black	150

### Placa cuadrada para ruedas

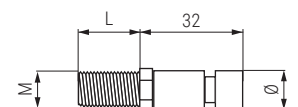
Square plate for castor



Código Code	Ø	A	B	Material	Acabado Finish	
1360.90	9	38	27	acero/steel	zincado/zinc	40
1360.91	10	42	32	acero/steel	zincado/zinc	40

### Espiga roscada

Threaded pin



Código Code	M	L	Ø	Material	Acabado Finish	
1360.94	M10	15	9	acero/steel	zincado/zinc	100
1360.95	M8	25	10	acero/steel	zincado/zinc	100
1360.96	M8	15	10	acero/steel	zincado/zinc	100
1360.97	M10	15	10	acero/steel	zincado/zinc	100
1360.98	M10	35	10	acero/steel	zincado/zinc	100