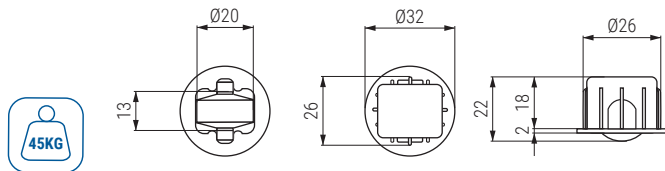
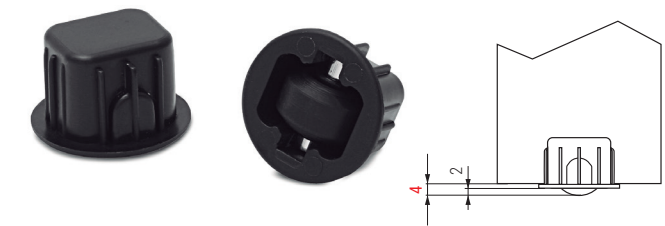
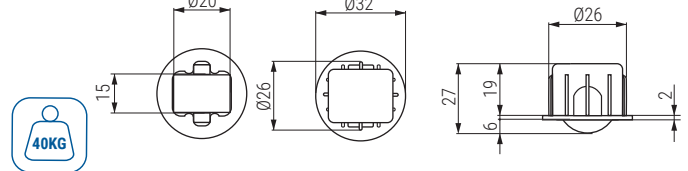
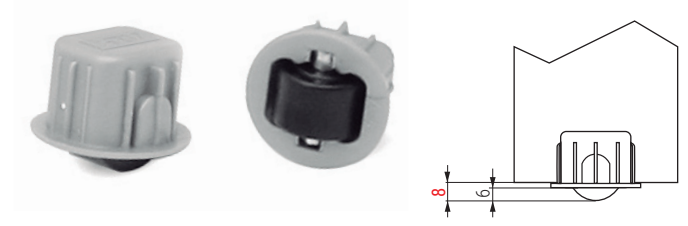


CASSONE A-2 Base fija de embutir Ø26
Embedded fixed castor



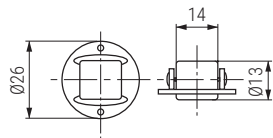
Código Code	Material	Acabado Finish	
597.11	poliuretano polyurethane	negro black	800

CASSONE A-6 Base fija de embutir Ø26
Embedded fixed castor



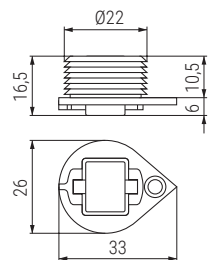
Código Code	Material	Acabado Finish	
597.12	poliamida-nílón polyamide-nylon	gris-negro grey-black	800

NEO Rodillo con placa
Embedded fixed castor



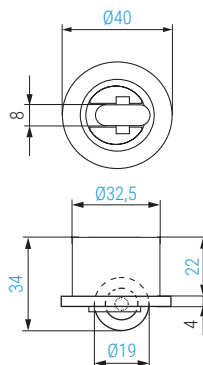
Código Code	Material	Acabado Finish	
1340.1	acero-plástico steel-plastic	zincado-negro zinc-black	1.000

ROLAN Base fija de embutir Ø22
Embedded fixed castor



Código Code	Material	Acabado Finish	
970.25	plástico-nílón/plastic-nylon	negro-blanco/black-white	1.000

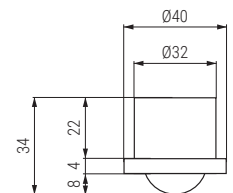
DOHA Base de embutir giratoria Ø35
Embedded swivel castor



ACTUALIZADO EL DÍA 22/05/2024

Código Code	Material	Acabado Finish	
381.49	acero-plástico steel-plastic	negro black	200

COMPO Esfera deslizante Ø32
Embedded swivel castor



Código Code	Material	Acabado Finish	
381.48	acero-plástico steel-plastic	níquel nickel	125